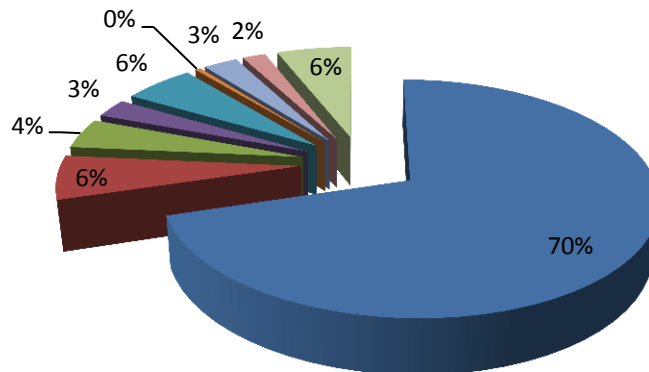
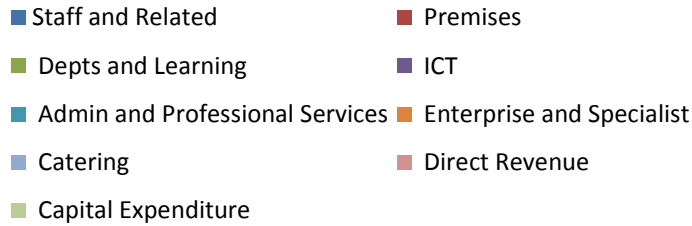




# Flamstead Village School Governors Financial Statement

## Expenditure Allocation 2013 - 14



The Body and Headteacher monitor the budget via the Resources Committee, ensuring best value is obtained across all areas of expenditure. Staffing costs continue to make up the largest area followed by Capital expenditure and Premises.

This year prudent financial management, along with committed PTA fundraising, has made it possible to complete projects to increase assets and provide enhancements for our pupils this year, including:

- ✚ All weather surface to the quiet garden
- ✚ Replacement of perimeter fencing
- ✚ Internal decoration to the Foyer, KS1 corridor, KS1 classroom
- ✚ Refurbishment of EYFS and KS1 classrooms
- ✚ Development of the outdoor learning environment in EYFS
- ✚ Re-lay pavement to side entrance
- ✚ Lift tree branches to safe height
- ✚ New security key pad
- ✚ Replacement of high level cladding
- ✚ ICT – laptops and trolley

The school had the boiler and hot water cylinder replaced during this financial year. This project was funded by County following a successful bid by the school. We have also purchased 'planters', for our sensory garden in the Early Years, through a grant from Harpenden Lions.

The school will enter the new financial year with a significant carry forward, on a solid footing planning to continue to invest in repairs and further enhancements to the fabric of the building. These will include KS2 class refurbishments, develop outdoor learning area for KS1, enhancements to the toilet facilities throughout the school, carpet and vinyl replacement, continue to replace high level cladding and the replacement of the window walling throughout the school.